

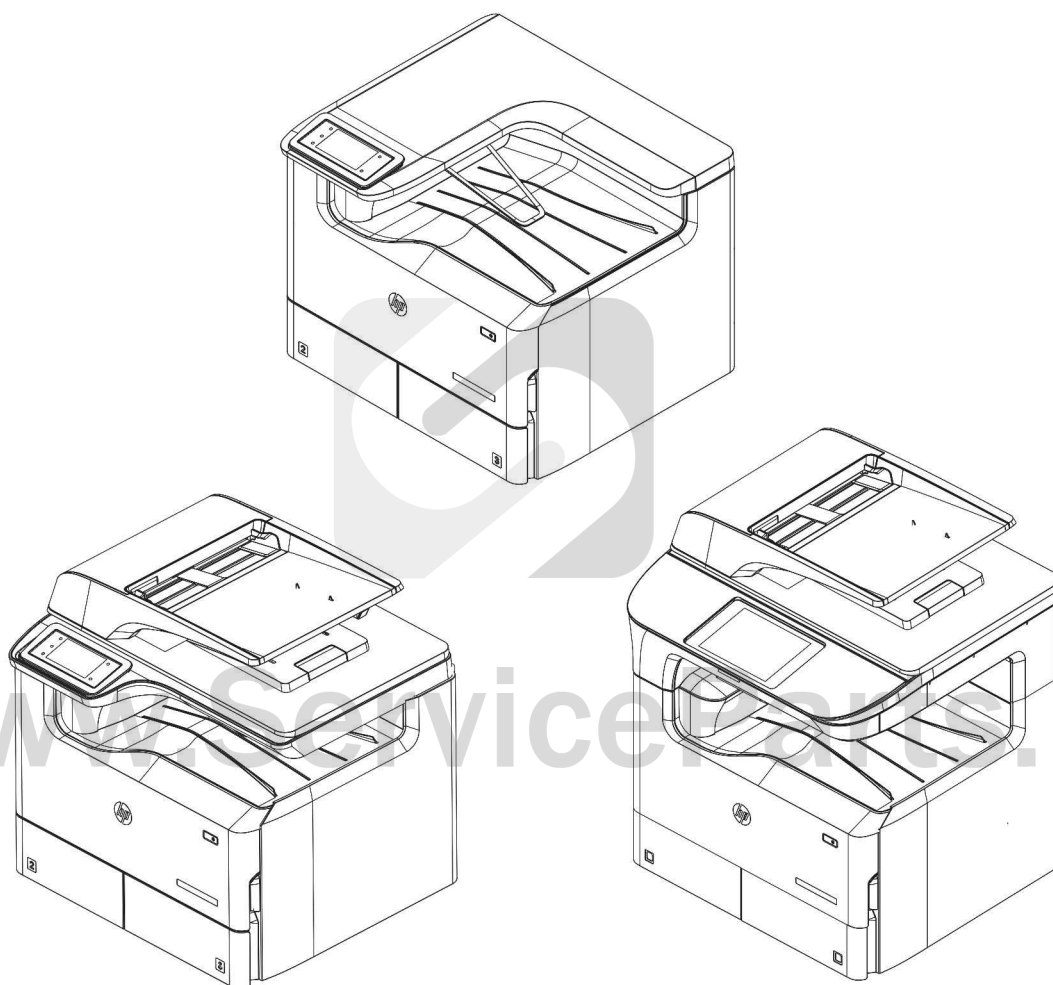


HP PageWide Pro MFP 772/777

HP PageWide Managed P75050

HP PageWide Managed MFP P77740/P77750/P77760

Repair Manual



www.hp.com/support/pagewidecolor750

www.hp.com/support/pagewidecolor772MFP

For printer theory and troubleshooting

Removal and replacement: Main printed circuit assembly

- [Introduction](#)
- [Step 1: Remove the rear cover](#)
- [Step 2: Remove the main printed circuit assembly \(MPCA\)](#)
- [Step 3: Unpack the replacement assembly](#)

Introduction

This document provides the procedures to remove and replace the main printed circuit assembly (MPCA).

[Click here to view a video of this procedure.](#)



IMPORTANT: When applicable, special installation instructions are provided for an assembly at the end of the removal procedure. Always completely read the removal instructions and follow all special installation instructions.

Before performing service

Turn the printer power off

- Disconnect the power cable.



WARNING! To avoid damage to the printer, turn the printer off, wait 30 seconds, and then remove the power cable before attempting to service the printer.

Use the table below to identify the correct part number for your printer. To order the part, go to www.hp.com/buy/parts.

Main printed circuit assembly (MPCA) part number	
A7W93-67026	Main printed circuit assembly (MPCA) (small touchscreen) with instruction guide
A7W93-67084	Main printed circuit assembly (MPCA) (large touchscreen) with instruction guide

Required tools

- Small flat-blade screw driver
- #10 TORX driver with a magnetized tip
- Optional: Needle-nose pliers



TIP: Needle-nose pliers make it easier to disconnect/connect flat-flexible cables (FFCs).

After performing service

Turn the printer power on

- Connect the power cable.
- Use the power switch to turn the power on.

Post service test

No post service test is available for this assembly.

Step 1: Remove the rear cover

 **CAUTION:**  The exposed area is electrostatic discharge sensitive (ESD).

A printer MFP model is shown in this procedure. However, the instructions are correct for all printer models.

1. Locate the rear cover latch at the top left corner of the cover (inside the cover).

 **TIP:** The rear cover has an embossed mark where the latch is located.

Figure 1-1002 Locate the rear cover latch



2. Use a small flat-blade screwdriver to carefully pry the top left corner of the rear cover away from the printer, and then push in against the latch to release it.

Figure 1-1003 Release the latch



3. Rotate the top of the cover away from the printer (callout 1), and then lift it up to remove it (callout 2).


 **Reinstallation tip:** Reverse the removal steps to install the assembly.

Figure 1-1004 Remove the rear cover

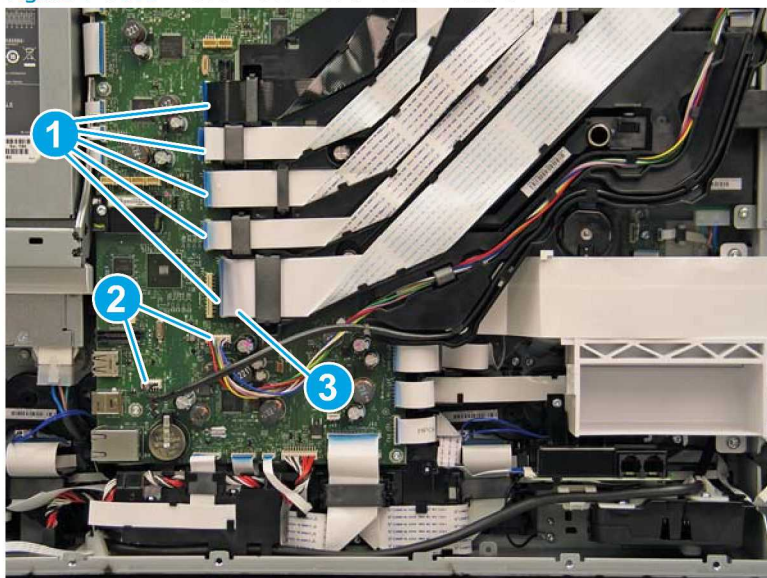


ep 2: Remove the main printed circuit assembly (MPCA)

A printer MFP model is shown in this procedure. However, the instructions are correct for all printer models.

1. At the rear of the printer, do one of the following:
 - **MFP models:** Disconnect five flat-flexible cables (FFCs) (callout 1) and two connectors (callout 2).
 - **SFP models:** Disconnect two connectors (callout 2) and one FFC (callout 3).

Figure 1-1005 Disconnect FFCs and connectors

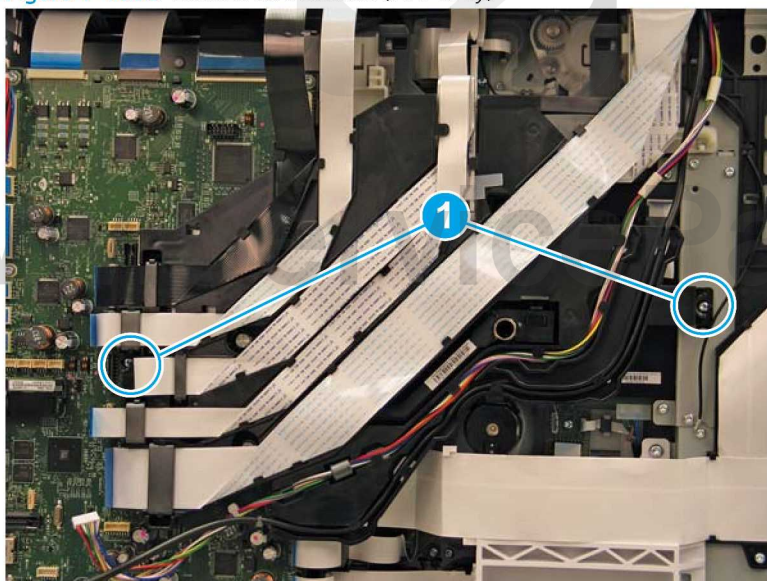


2. Loosen two screws (callout 1).



NOTE: These screws are captive and cannot be removed.

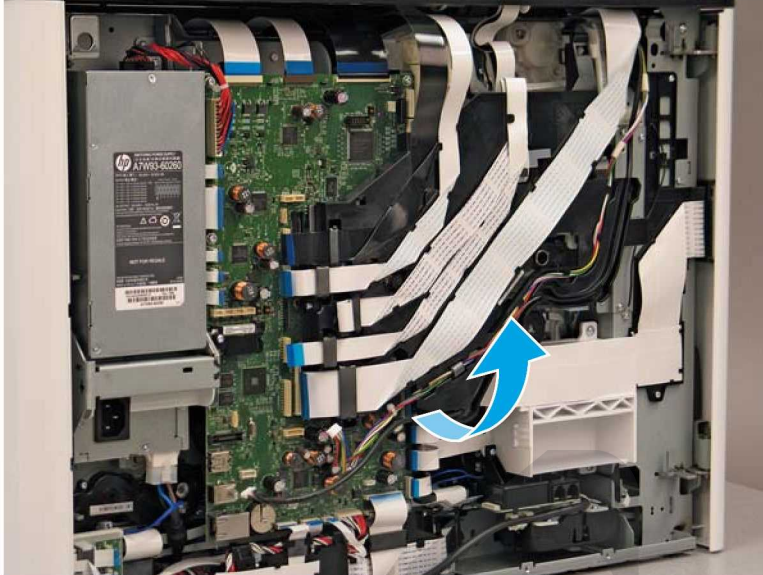
Figure 1-1006 Loosen two screws (MFP only)



3. Rotate the FFC tray up and away from the printer.

 **NOTE:** When the tray is fully raised, it locks in the up position.

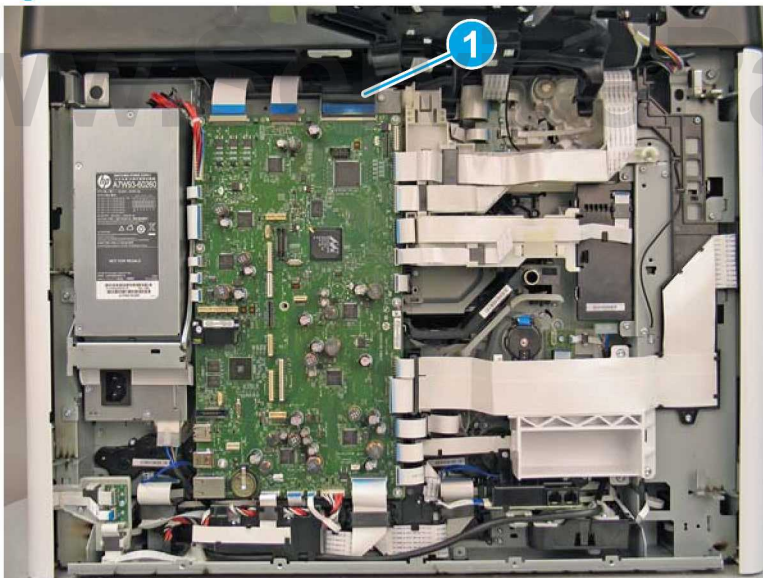
Figure 1-1007 Raise the FFC tray (MFP only)



4. Disconnect 24 flat-flexible cables (FFCs) and 2 connectors.

 **CAUTION:** One FFC connector (callout 1) is a zero insertion force (ZIF) connector. Open a small clip on the connector to remove the FFC.

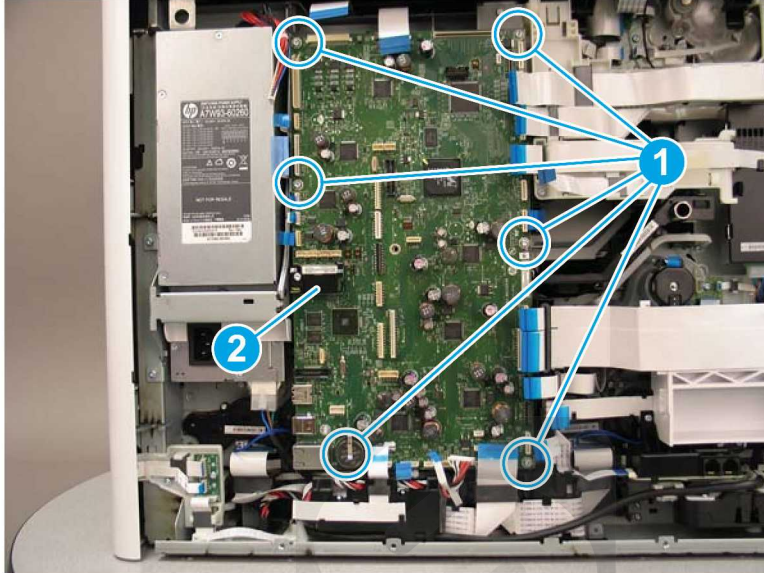
Figure 1-1008 Disconnect all FFCs and connectors



5. Remove six screws (callout 1).

 **IMPORTANT:** For a replacement MPCA, remove the eMMC (callout 2). Save this part, and install it on the replacement MPCA.

Figure 1-1009 Remove six screws

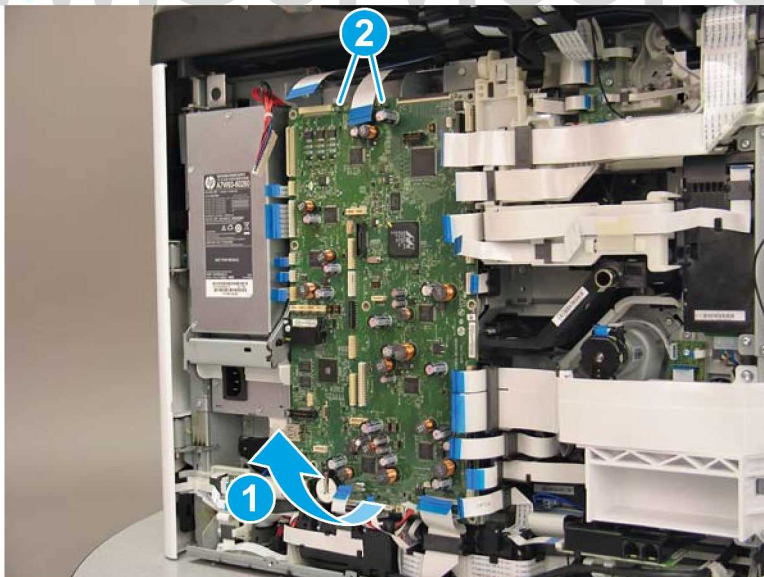


6. Rotate the bottom of the MPCA away from the printer (callout 1), and then release it from two sheet-metal tabs (callout 2) to remove it.

 **NOTE:** If the PCA is being replaced, use the packaging material from the replacement PCA to send the defective part back to HP.

 **Reinstallation tip:** Reverse the removal steps to install the assembly.



Figure 1-1010 Remove the MPCA



ep 3: Unpack the replacement assembly

 **CAUTION:**  This assembly is electrostatic discharge sensitive (ESD).

1. Unpack the replacement part from the packaging.

 **CAUTION:**  Some parts are sensitive to electrostatic discharge (ESD). Always perform service work at an ESD-protected workstation or mat. If an ESD workstation or mat is not available, touch the sheet-metal chassis to provide a static ground before touching an ESD-sensitive assembly. Protect the ESD-sensitive assemblies by placing them in ESD pouches when they are out of the printer.

If the replacement part is a roller or pad, avoid touching the spongy part of it. Skin oils on the roller or pad can cause paper pickup and/or print-quality problems. HP recommends using disposable gloves when handling rollers or pads or washing your hands before touching rollers or pads.

 **IMPORTANT:** Make sure that all of the shipping materials (for example shipping tape) are removed from the replacement part prior to installation.

2. Use the packaging material from the replacement PCA to send the defective part back to HP.
3. To install an assembly, reverse the removal steps.

 **NOTE:** When applicable, special installation instructions are provided for an assembly at the end of the removal procedure. Always completely read the removal instructions and follow all special installation instructions.
